

REVERSE
Engineering

Printed Circuit

Boards

TUBE

TIME



THIS IS A HANDS ON WORKSHOP!

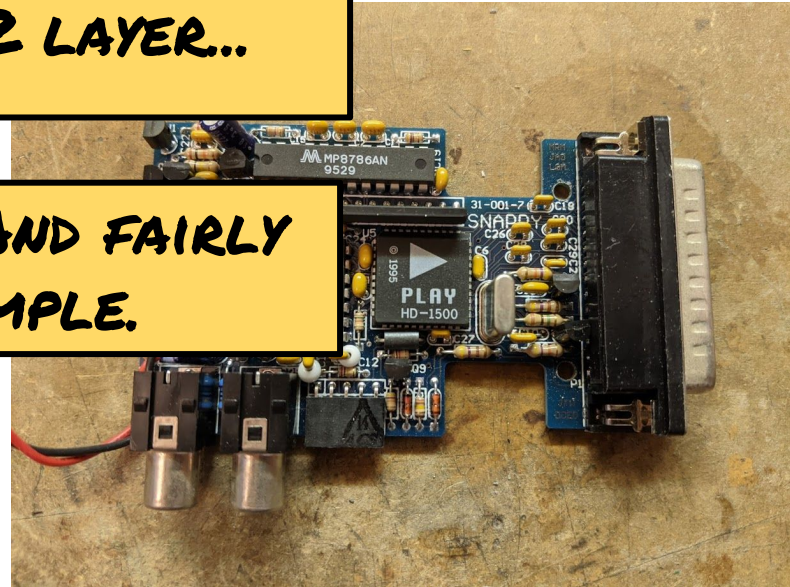


**I BROUGHT A BOARD,
AND I HOPE YOU DID
TOO!**

**YOUR BOARD FOR THE
WORKSHOP SHOULD BE...**

...2 LAYER...

**...AND FAIRLY
SIMPLE.**

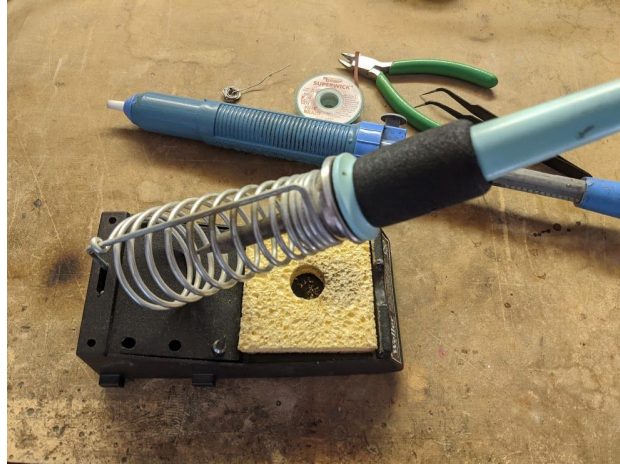


YOU WILL ALSO NEED...

A FLASHLIGHT



**SOLDERING TOOLS
(OPTIONAL)**



AND SOFTWARE

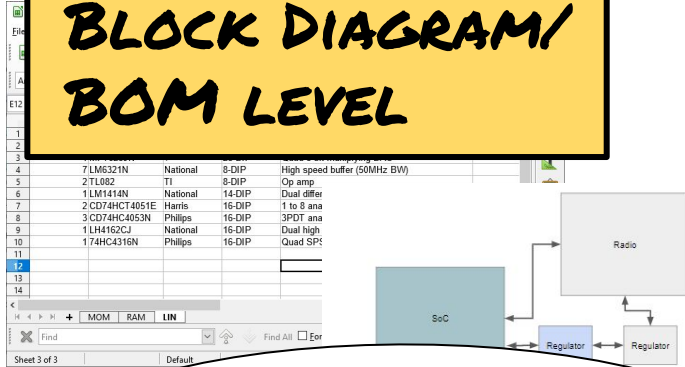


KiCad

READY?

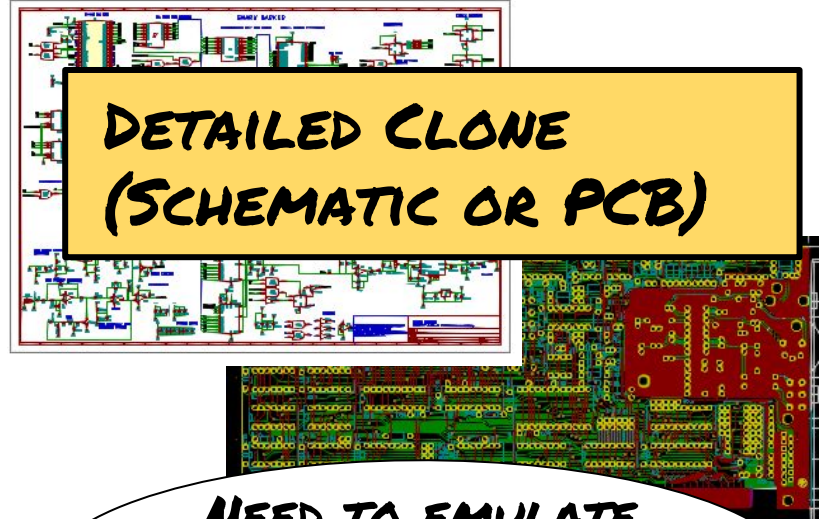
TWO KINDS OF PCB REVERSE ENGINEERING!

**BLOCK DIAGRAM/
BOM LEVEL**

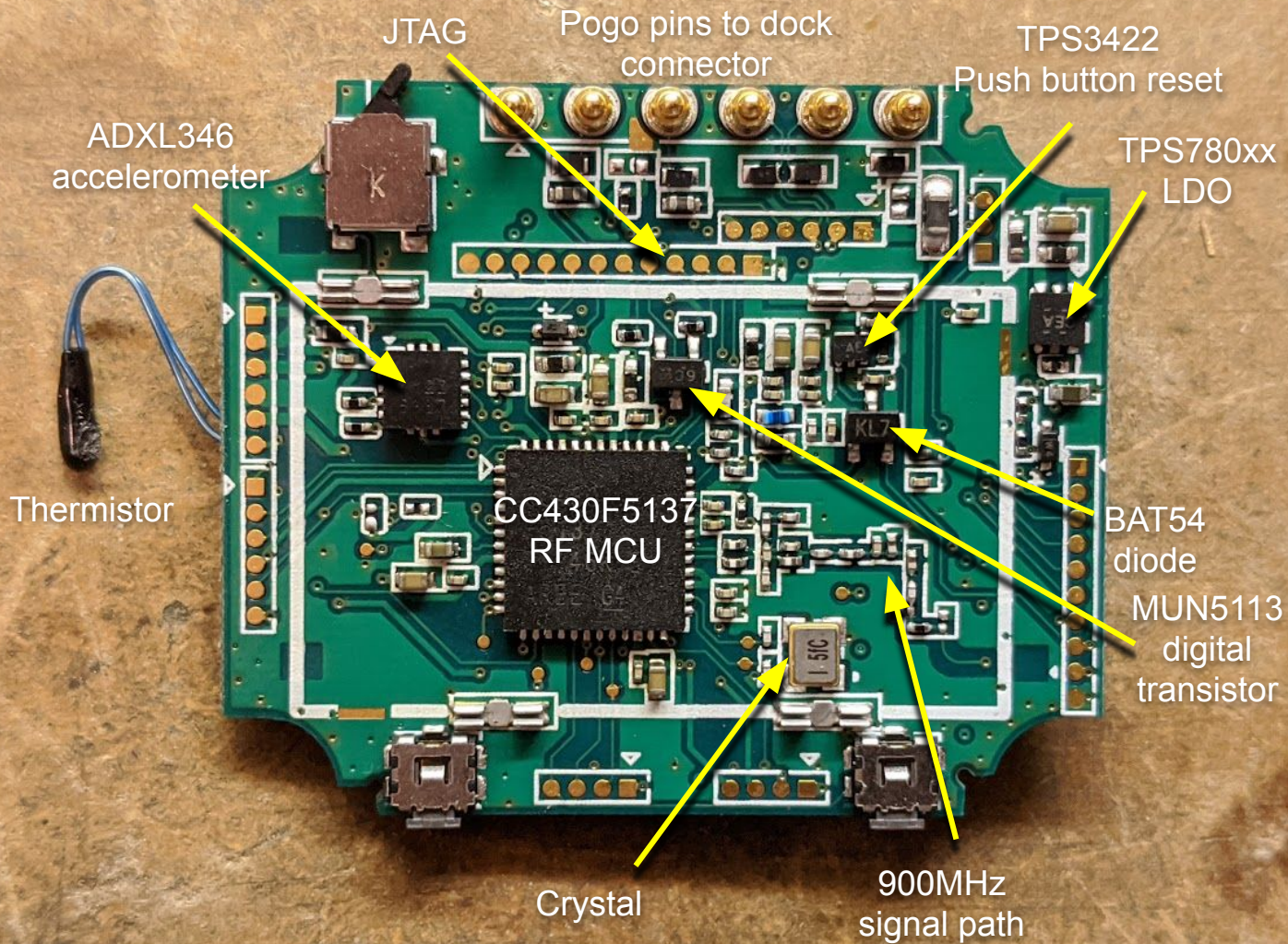


**GOOD FOR A
GENERAL IDEA OF
HOW IT WORKS!**

**DETAILED CLONE
(SCHEMATIC OR PCB)**



**NEED TO EMULATE
OR CLONE IT? DO IT
THIS WAY.**



Chinese spy chip ;)

Crystals

GEN :)

MUN5113
digital
transistor

White LED

Inductors

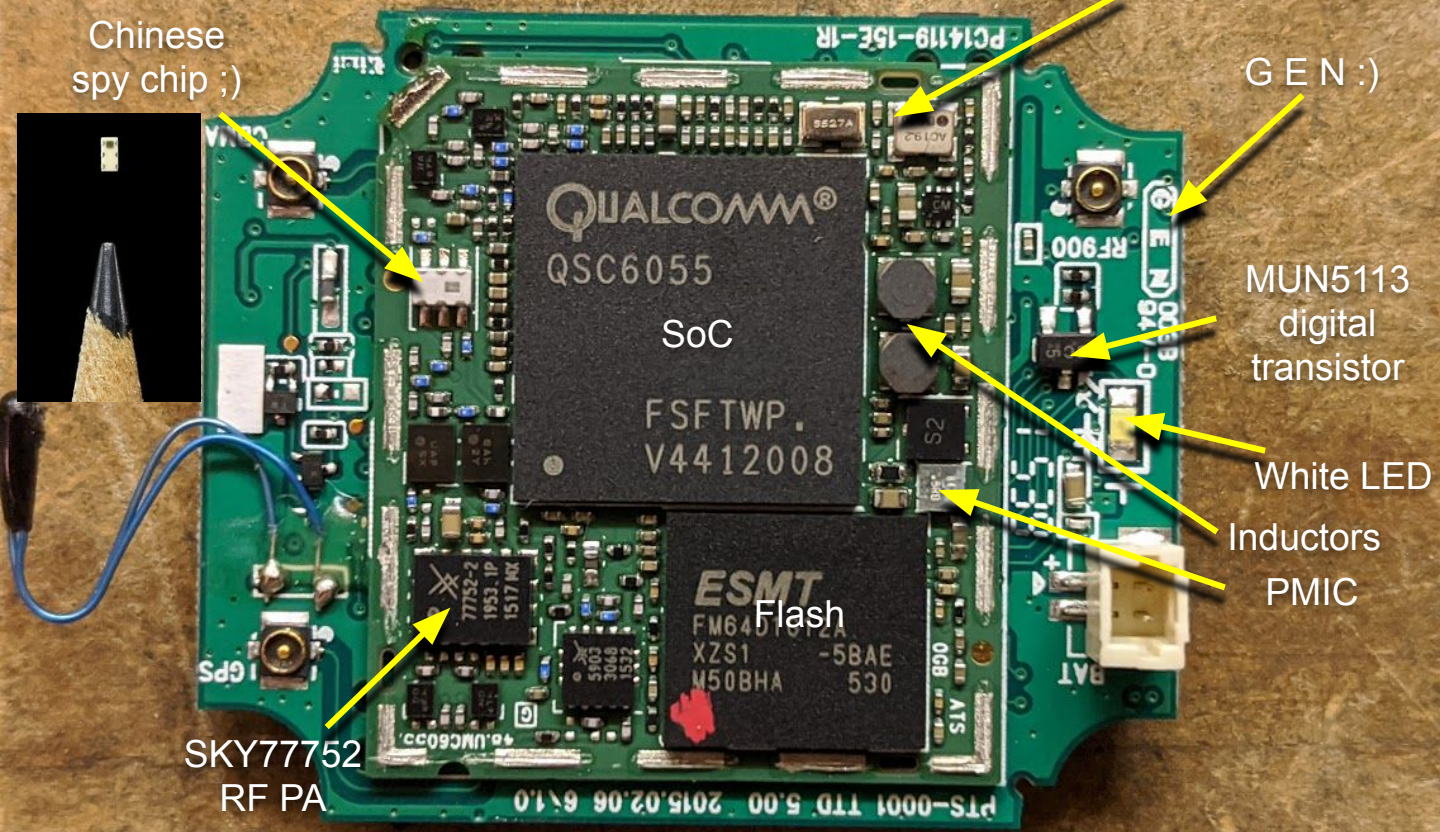
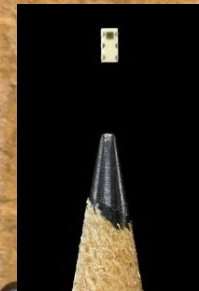
PMIC

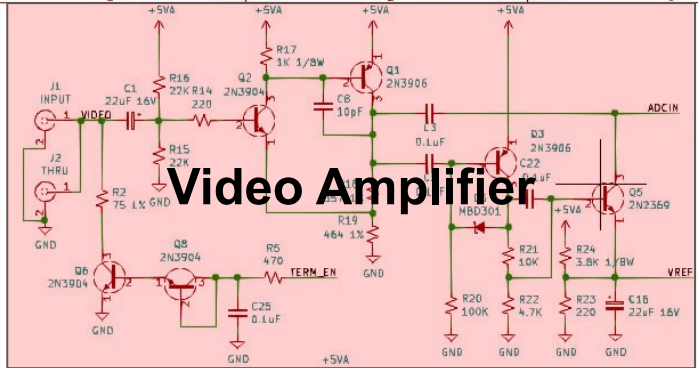
QUALCOMM®
QSC6055
SoC
FSFTWP.
V4412008

Flash
ESMT
FM645
XZS1 -5BAE
M50BHA 530

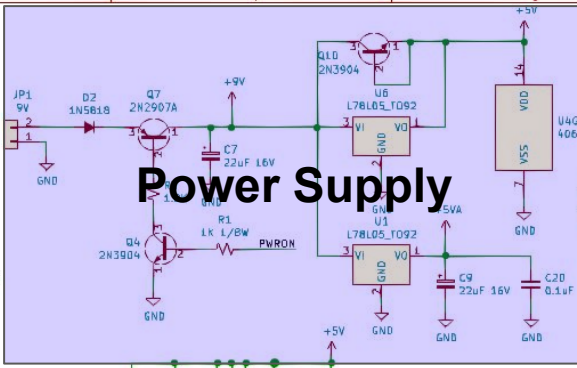
SKY7752-2
1953 1P
1517 MK

SKY7752
RF PA

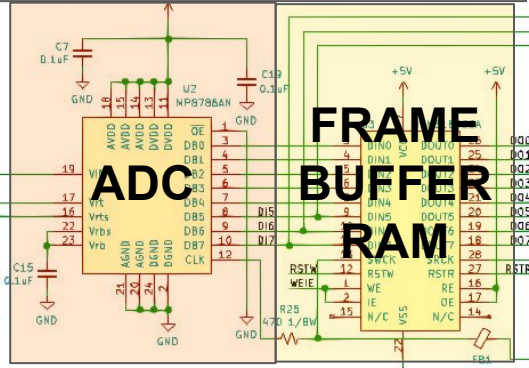




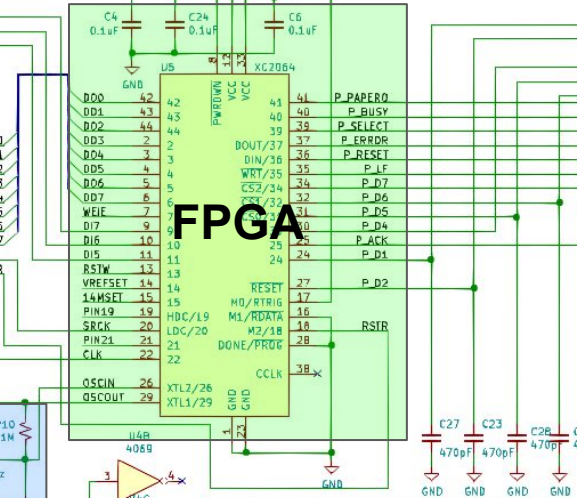
Video Amplifier



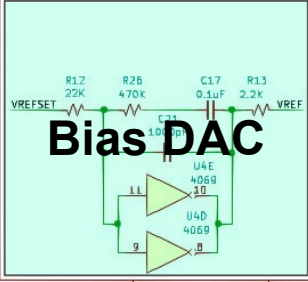
Power Supply



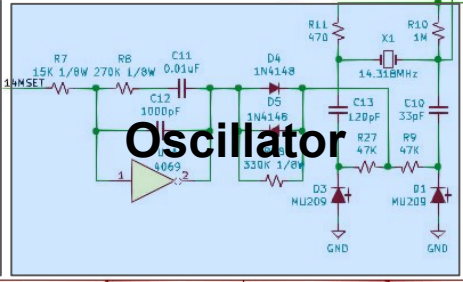
FRAME BUFFER RAM



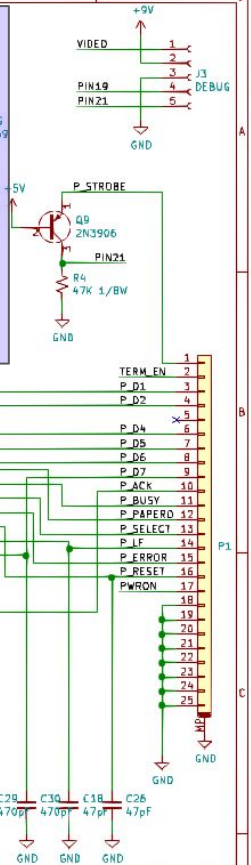
FPGA



Bias DAC



Oscillator



Snappy Video Snapshot 31-001-7
 Reverse engineering by @TubeTimeUS
 6-Sept-2020

Sheet: /
 File: snappy.sch
Title:
 Size: A4 Date:
 KICad E.D.A. kicad (5.1.0)-1 **Rev:** 1/1

ZOOMER

**WHEN HANDED
A COMPACT DISC**



**BOTH METHODS START
THE SAME WAY...**

SO LET'S BEGIN!

**FIRST, WE NEED A BILL
OF MATERIALS (BOM)**

	A	B	C	D
1	Designator	Package	Part Markings	Part Number/Value
2	Q1	SOT-23	K1N	?
3	U1	5x5 QFN-32	MEGA328P	ATmega328P
4	R1	0805	104	10K
5	C1	0603	-	?

CAREFULLY EXAMINE THE ENTIRE BOARD. FOR EACH PART, RECORD:

DESIGNATOR

PACKAGE

MARKINGS

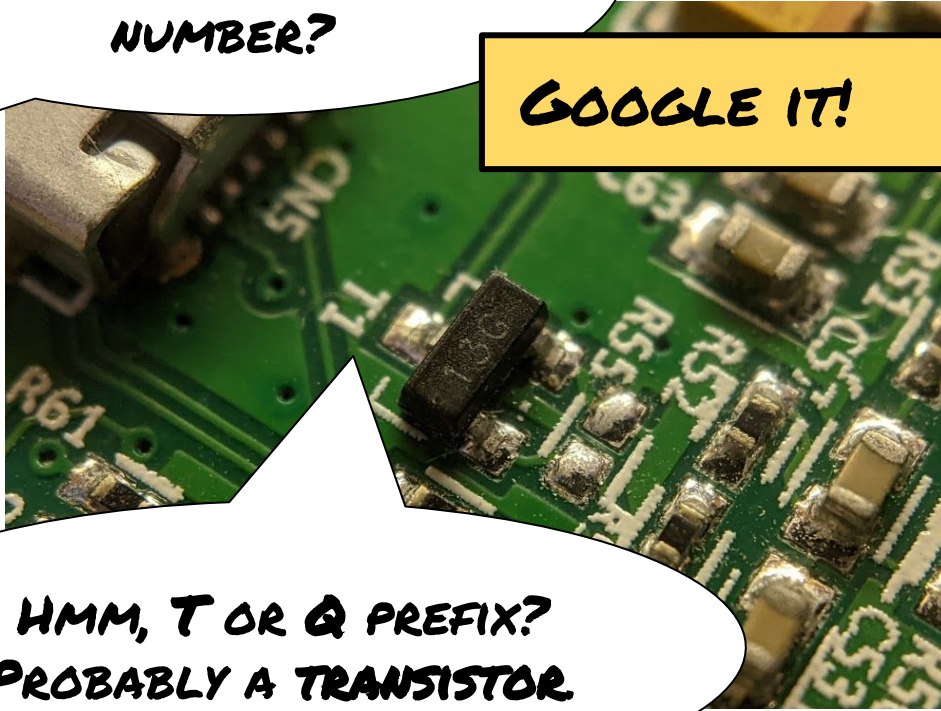
	A	B	C	D
1	Designator	Package	Part Markings	Part Number/Value
2	Q1	SOT-23	K1N	?
3	U1	5x5 QFN-32	MEGA328P	ATmega328P
4	R1	0805	104	10K
5	C1	0603	-	?

AND PART NUMBER, IF YOU CAN FIGURE IT OUT!

HOW DO I FIGURE
OUT THIS PART
NUMBER?

GOOGLE IT!

HMM, T OR Q PREFIX?
PROBABLY A TRANSISTOR



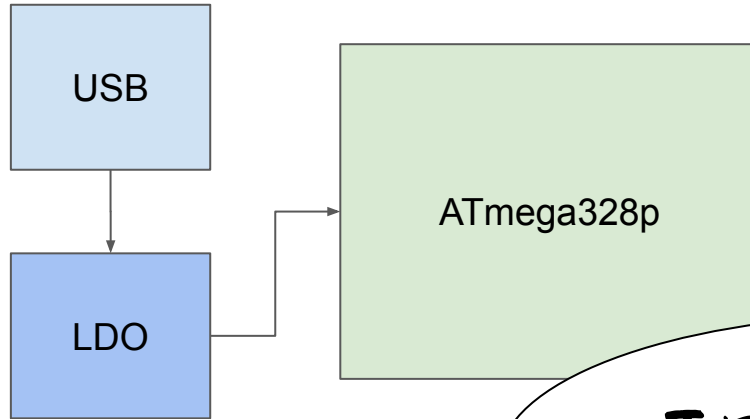


**WHAT ABOUT
UNMARKED PARTS?**

MEASURE IT! (R'S AND C'S)

**FIGURE IT OUT LATER BASED
ON PINOUT (IC'S)**

BLOCK DIAGRAM TIME!



JUST IGNORE MINOR COMPONENTS.

NOW IT IS YOUR TURN!

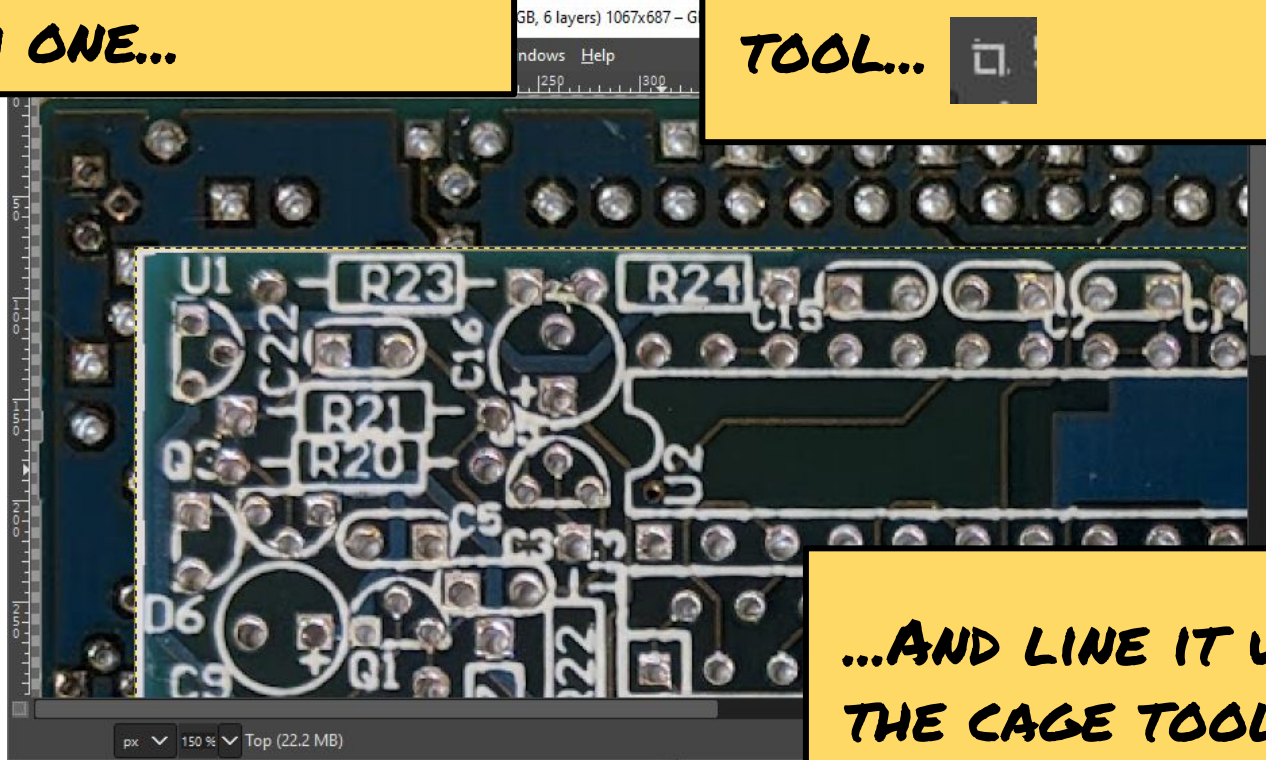
**THIS IS THE REAL HARD
PART.**

**WE NEED HIGH RESOLUTION
PHOTOS OF THE TOP AND
BOTTOM.**

**ONLY GOOD FOR
2-LAYER AND SOME
4-LAYER BOARDS.**

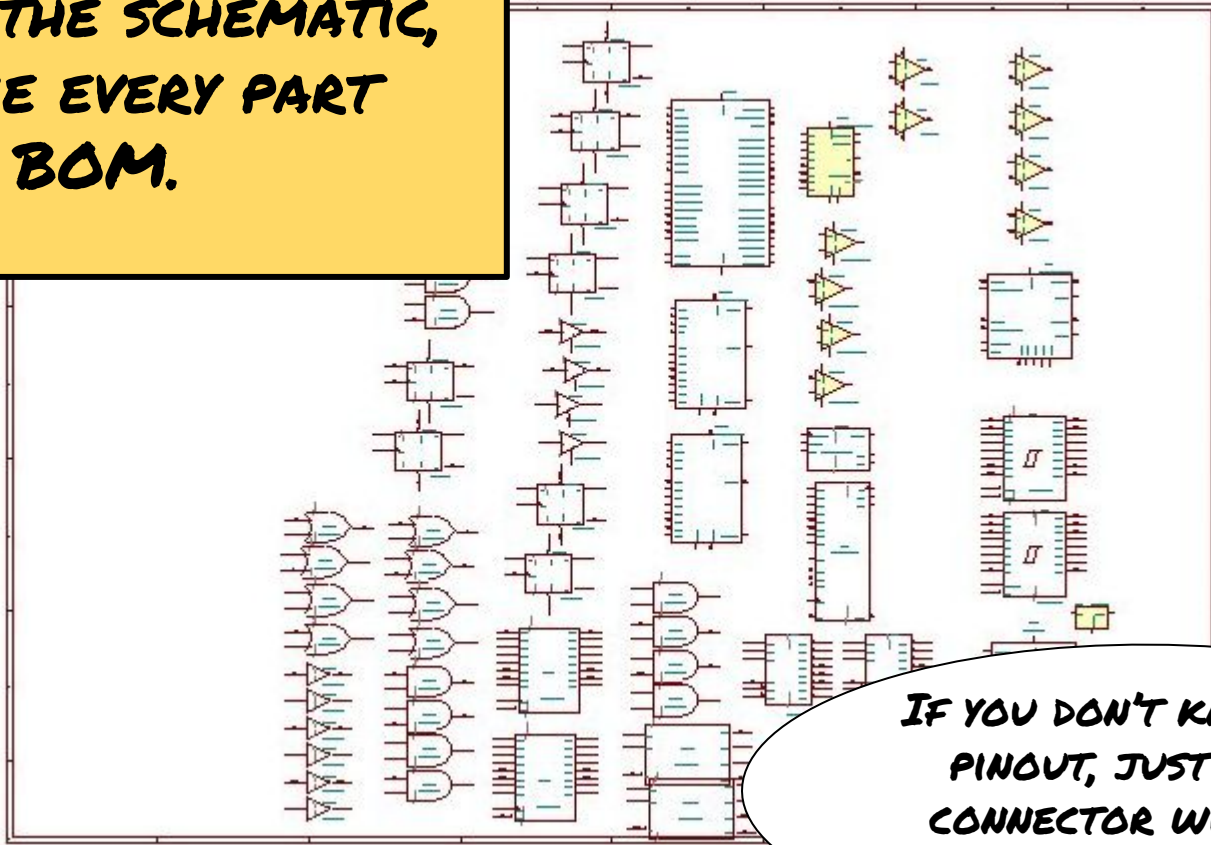
**IMPORT THE IMAGES
INTO GIMP, FLIP THE
BOTTOM ONE...**

**...CROP IT WITH THE CROP
TOOL...**



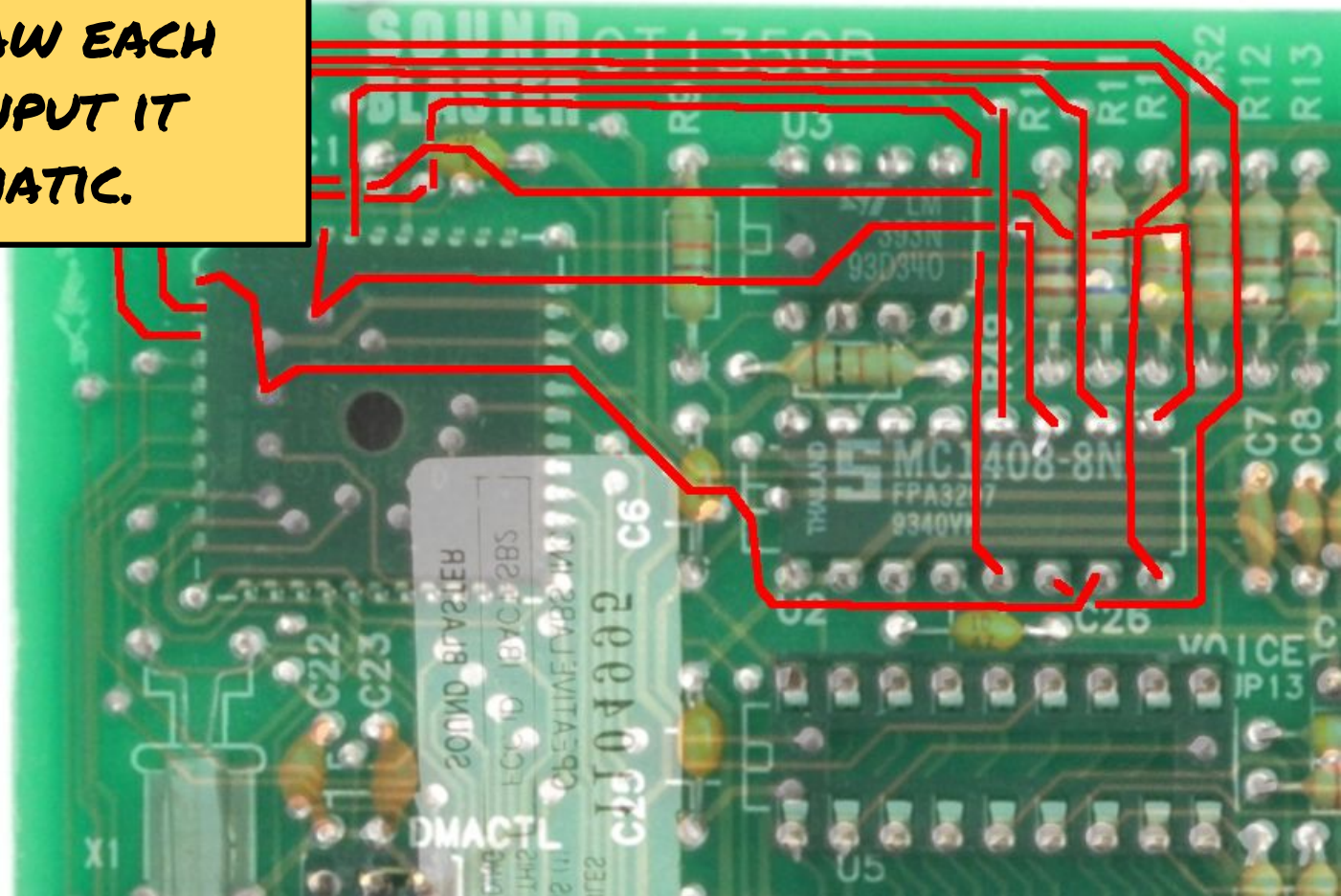
**...AND LINE IT UP USING
THE CAGE TOOL.**

**TO START THE SCHEMATIC,
JUST PLACE EVERY PART
FROM THE BOM.**



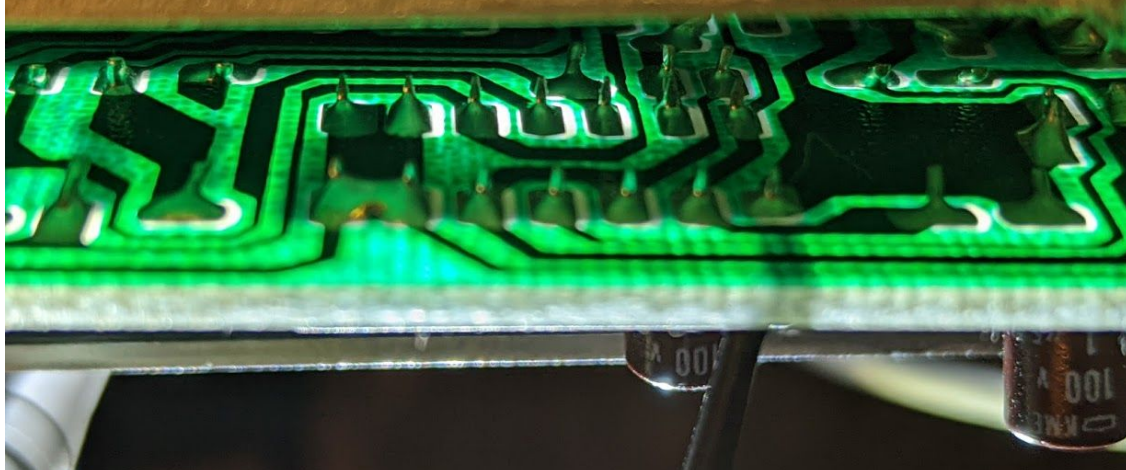
**IF YOU DON'T KNOW THE
PINOUT, JUST USE A
CONNECTOR WITH THE
SAME NUMBER OF PINS.**

CREATE SOME NEW
LAYERS, AND DRAW EACH
TRACE AS YOU INPUT IT
INTO THE SCHEMATIC.



TRICKS:

- Use a multimeter to "buzz out" mystery connections
- Shine a flashlight through the board
- Remove parts to look underneath

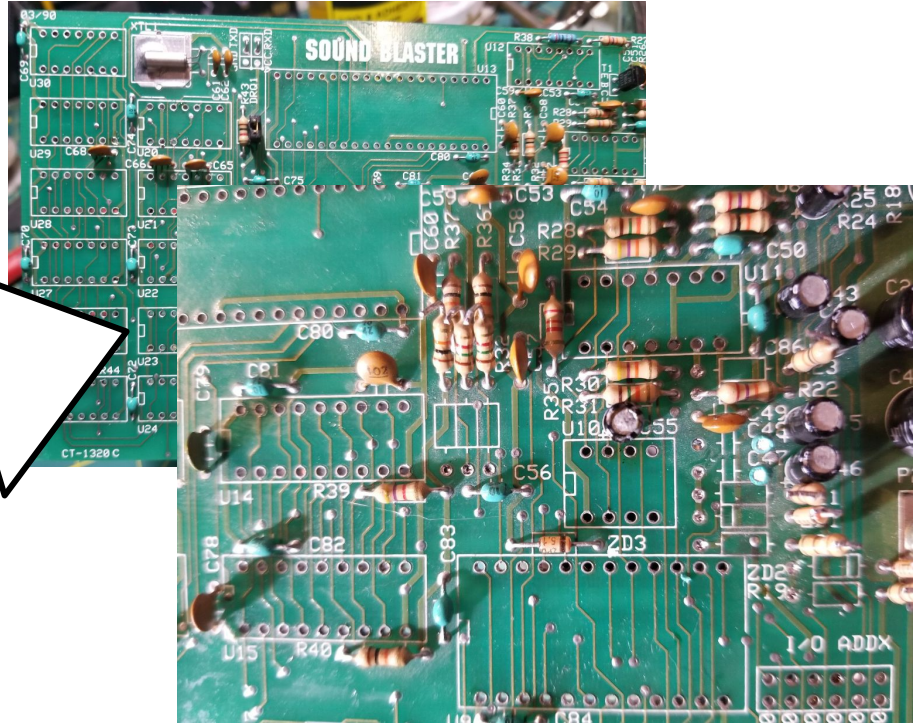


REMOVING PARTS...



Tube Time
@TubeTimeUS

wanted: your *broken* old Sound Blaster 1.0, 1.5, or 2.0 cards. that DSP needs to get dumped. (pic from Wikipedia)



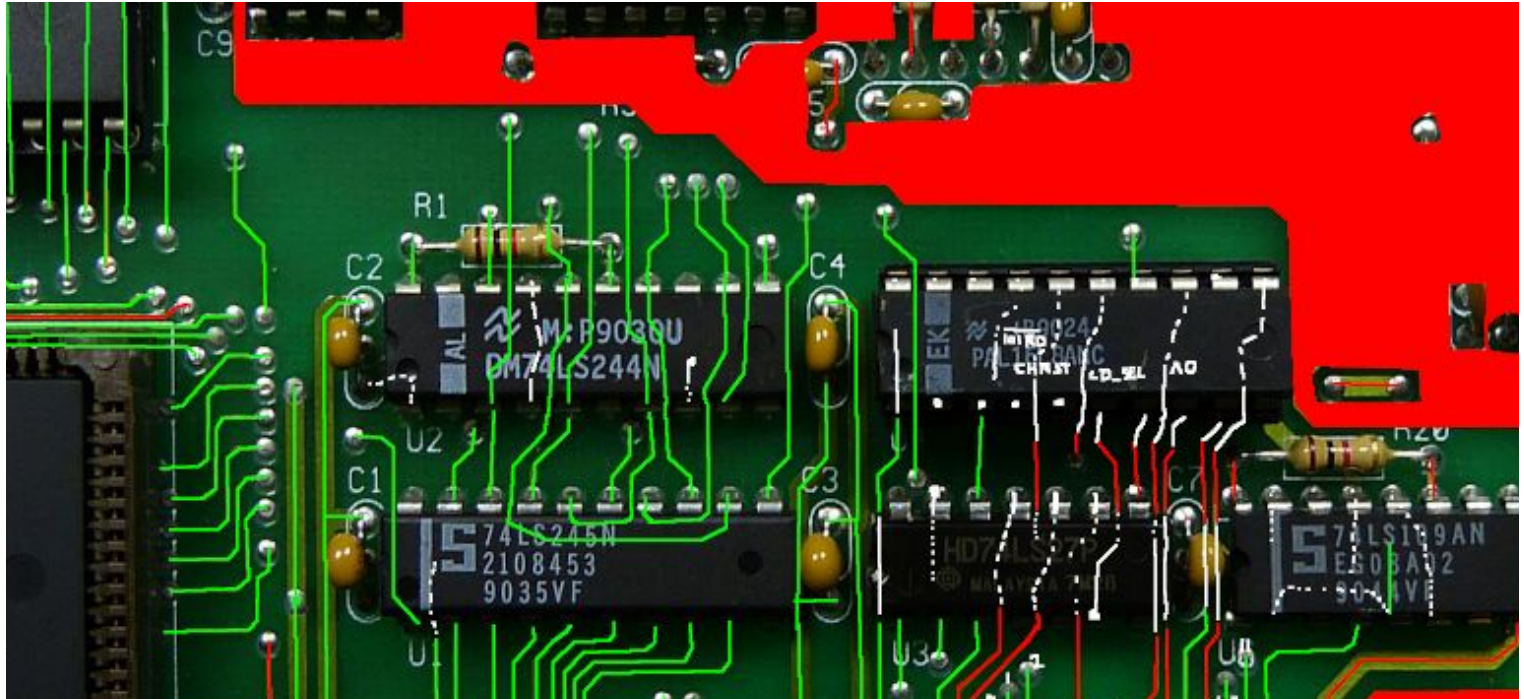
12:59 PM - 17 Jul 2018

77 Retweets 169 Likes



14 77 169 ||

SOMETIMES YOU MUST GUESS.



NOW IT IS YOUR TURN!

ON COMMAND VIDEO

SK A-V CO

80-01426

J2

J3



AUDIO

VIDEO

DC IN

TO VCP

+12V GND

U1

U2

Q4

Q1

Q2

Q3

L1

L2

R13

R8

R4

R2

R1

R5

R12

R7

C10

C11

C7

C8

R6

R11

R10

C1

R9

C3

C1

Q5

C15

C10

L2

C11

C4

R13

R8

R4

R2

C1

R9

C3

C1

Q5

C15

C10

L2

C11

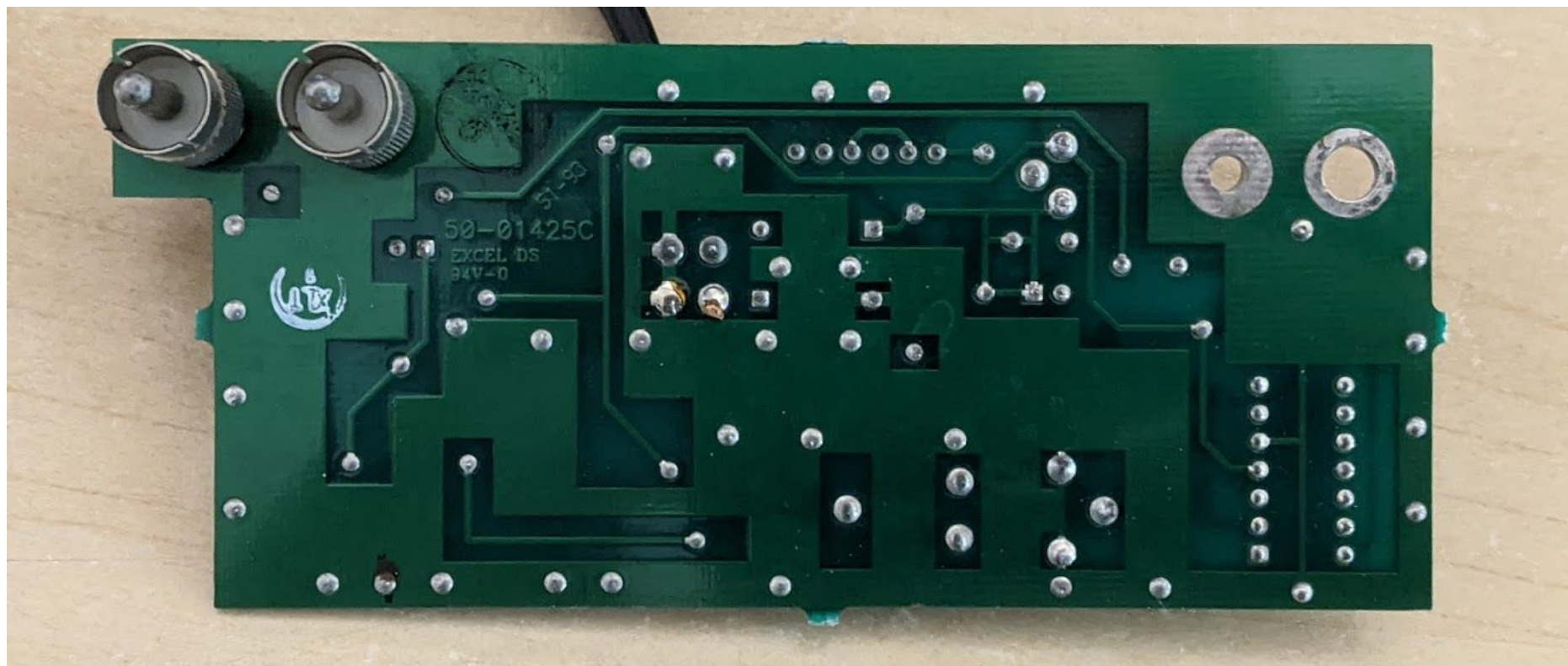
C4

R13

R8

R4

R2

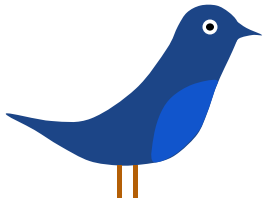


50-01425C
EXCEL DS
94V-0

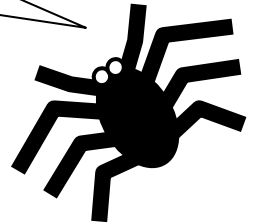
LIT

THANKS FOR COMING!

@TUBETIMEUS



HTTP://TUBETIME.US



BACK UP SLIDES

TOP MARK RESOURCES

- Google topmark in quotes along with the package name.
- Topmark database: <https://alltransistors.com/smd-search.php>
- Maxim topmark search <https://www.maximintegrated.com/en/design/packaging/topmark.html>
- TI topmark search <https://www.ti.com/packaging/docs/partlookup.tsp>

Don't know what the package is?

- Package names: <https://www.toplevel.tv/SOT.html>